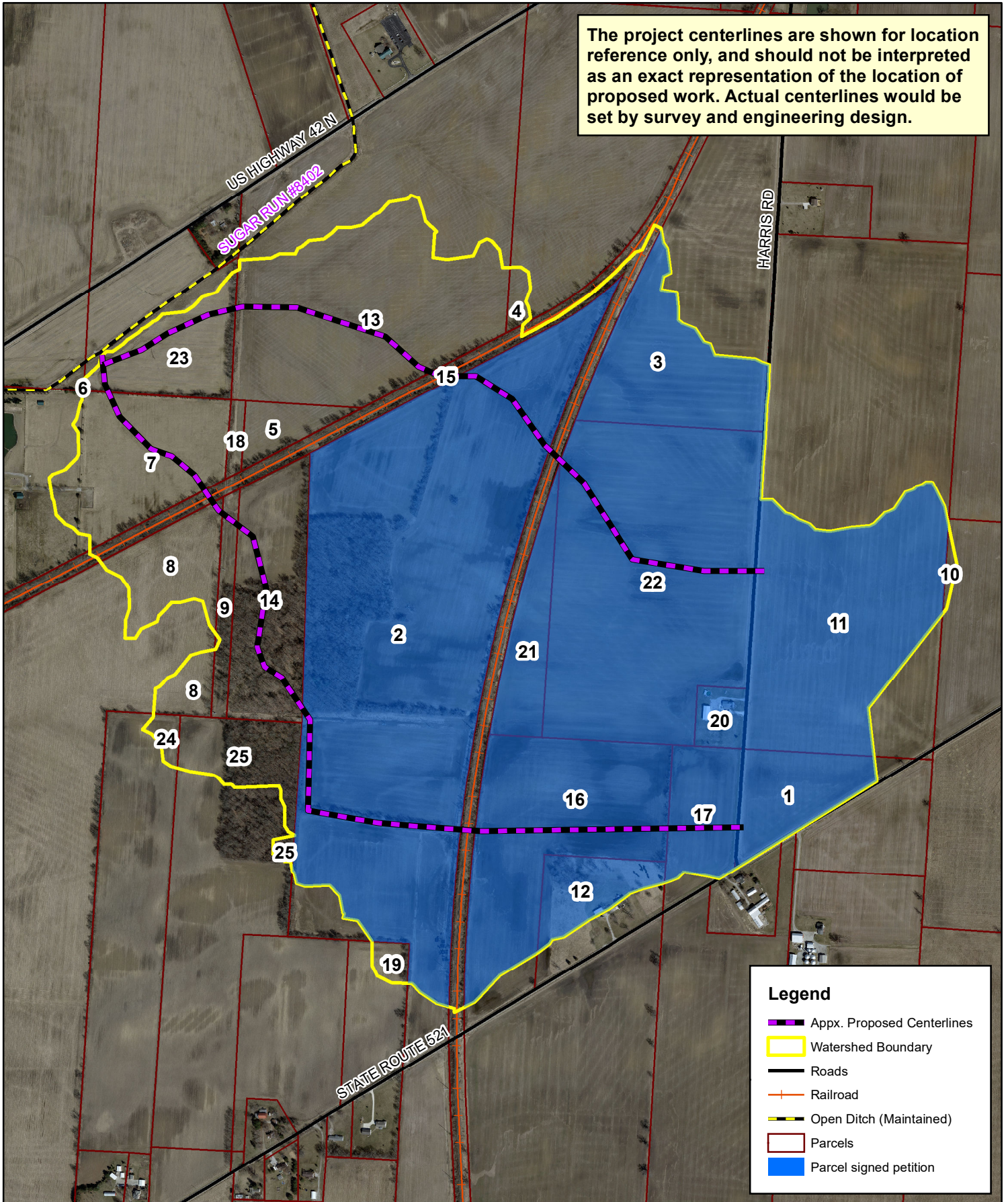


The project centerlines are shown for location reference only, and should not be interpreted as an exact representation of the location of proposed work. Actual centerlines would be set by survey and engineering design.



Legend

- Appx. Proposed Centerlines
- Watershed Boundary
- Roads
- Railroad
- Open Ditch (Maintained)
- Parcels
- Parcel signed petition



Delaware Soil & Water Conservation District
 557 Sunbury Rd. Suite A
 Delaware, OH 43015
 (740) 368-1921
 soilandwater.co.delaware.oh.us



0 450 900 Feet

Note:
 Delaware SWCD makes no guaranty or warranty as to the accuracy of the information on this map.

